

# VEMA®

# CRANE

VEMA Crane b.v.  
Nieuwe Bredase Baan 2  
4825BP Breda  
The Netherlands

T +31(0) 162 681050  
E [sales@vemacrane.com](mailto:sales@vemacrane.com)  
I [www.vemacrane.com](http://www.vemacrane.com)

## Liebherr LTM1040-2.1 051743

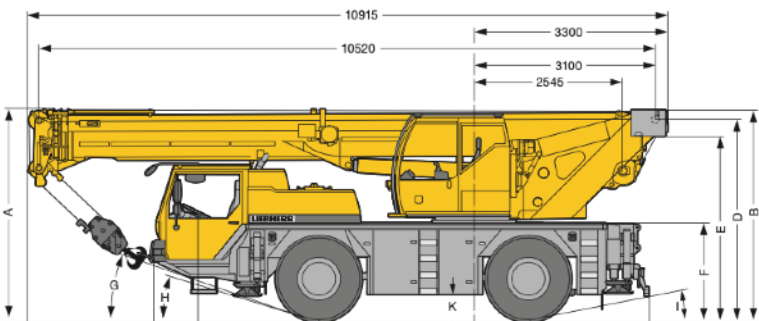


### Carrier

Make: Liebherr  
Type: LTM1040-2.1  
Serial number: 051743  
Chassis number: W092725008EL05244  
Year: 2007  
Colour: Yellow - Grey  
Lifting capacity: 40 Ton  
Hours: 5.901  
Millage: 131.577 km  
Engine: Mercedes-Benz  
Output hp/kW: 278 | 205  
Transmission: ZF Powershift  
Suspension: Hydropneumatic  
Drive: 4 x 4  
Tires: 445 / 95 R25 (16:00)  
1st axle: 70% 70%  
2nd axle: 50% 50%

### Superstructure

Main boom: 10.5 - 35.0 meter  
Winch: 13mm | 165 meter | 34kN  
Hooks: 3-sheave | 22.4 Ton  
Counterweight: 6.5 Ton  
LMI: Liccon 2 | 75%  
Hours: 11.418  
Extra: Telma brake  
Storage box  
Light pack



	10.5 m	15.4 m	20.3 m	25.2 m	30.1 m	32.6 m	35 m	
2.5	40							2.5
3	35.4	30.6	19.7	15.4				3
3.5	32.0	28.2	20.2	15.5	17.5	13.1		3.5
4	29.8	25.6	20.6	15.6	18	13	15.1	4
4.5	26.7	23.5	21.2	15.9	18.3	13	14.8	4.5
5	24.3	21.6	21.3	16.1	18.8	12.8	14.3	5
6	20	18.5	18.8	16.4	18.7	12.5	13.3	6
7	15.6	15.4	15.7	15.6	15.3	12.4	12.4	7
8			13	13	12.6	12.3	11.5	8
9			10.7	10.8	10.8	10.4	9.2	9
10			9	9	9.1	9.1	8.9	10
11			7.7	7.7	7.8	7.8	7.9	11
12			6.7	6.7	6.8	6.8	6.9	12
13					6	6	6.1	13
14					5.3	5.3	5.4	14
15					4.7	4.7	4.8	15
16					4.3	4.3	4.3	16
17						3.8	3.8	17
18						3.5	3.5	18
19						3.2	3.2	19
20						2.9	2.9	20
21						2.7	2.7	21
22						2.5	2.5	22
23						2.3	2.3	23
24						2.1	2.1	24
25						1.9	1.9	25
26						1.7	1.7	26
27						1.5	1.5	27
28						1.4	1.4	28
29						1.3	1.3	29
30						1.2	1.2	30
31						1.1	1.1	31

\* nach hinten - over rear - en arrière - sul posteriore - hacia atrás - cзпasa нaпepeднy cтopoнy  
\*\* teleskopierbare Lasten - telescopic loads - capacite de levage en telescopage - portate del braccio in estensione - cargas telescopables - тeлeскoпoвaннe нoгa нaпpяжeннaя